

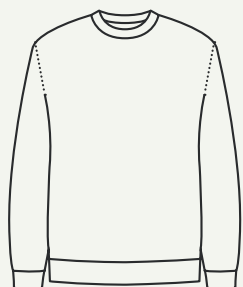
# Fit Guide

To make it easier to assess the sizing, we have defined various product fits.

## Apparel

### Basic Fit

The Basic Fit stands for a modern cut that if worn "true to size" should neither be too tight nor too wide.

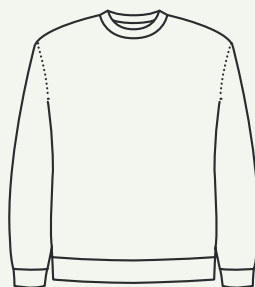


#### BASIC FIT MODELS

'77 T-shirt  
'16 Park T-shirt  
'90 Jersey  
'12 Hoodie  
Sweatshirt  
Longsleeve  
'12 Basic Hoodie  
'06 Sweatpants

### Comfy Fit

Inspired by the casual silhouettes of past decades, the Comfy Fit ensures a relaxed look.

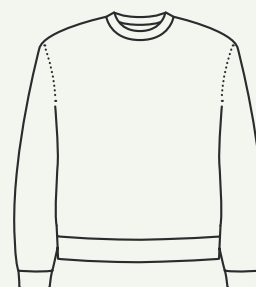


#### COMFY FIT MODELS

'94 Campus T-shirt  
'86 Crew Sweater  
'83 Half Zip

### Boxy Fit

In reminiscent of the boxy vintage cuts of bygone times, the Boxy Fit describes a wide cut with a slightly cropped length.



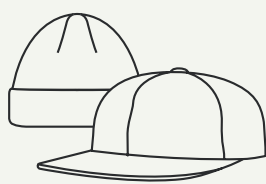
#### BOXY FIT MODELS

'89 Band T-shirt  
'76 Boxer Hoodie  
'96 Box Sweater

## Headwear

### Low Fit

The Low Fit stands for a flat cut. Beanies in this fit do not or only partially cover the ears.



#### LOW FIT MODELS

'16 Dad Cap  
'86 Skate Cap  
'04 Fisherman Beanie  
'30 Docker Beanie

### Medium Fit

Medium Fit models have a classic cut with a medium height.

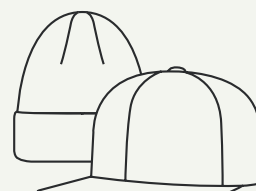


#### MEDIUM FIT MODELS

'08 Basecap  
'09 Polo Cap  
'92 Snapback  
'19 Tour Cap  
'06 Skate Beanie  
'02 Beanie  
'96 Bucket Hat  
'13 Camp Bucket Hat

### High Fit

With their extra height the High Fit models ensure a relaxed look.



#### HIGH FIT MODELS

'03 Trucker Cap  
'94 City Beanie  
'14 Beanie  
'19 Nordic Beanie

## Socks

### Medium Fit



#### MEDIUM FIT MODELS

'17 Easy Socks  
'54 Office Socks  
'90 Sport Socks